



Continuous light element, with integrated LED, clear, 24 V AC/DC, Diameter 50 mm

product brand name	SIRIUS		
product designation	Continuous light element		
design of the product	including light sources		
General technical data			
type of voltage of the operating voltage	AC/DC		
operating voltage			
• 1 at DC rated value			24 V
• 1 at AC at 50 Hz rated value			24 V
• 1 at AC at 60 Hz rated value			24 V
relative positive tolerance of the operating voltage	10 %		
relative negative tolerance of the operating voltage	-10 %		
consumed current maximum	40 mA		
reference code according to EN 61346-2	P		
Lamp			
product component light source	Yes		
type of light source	LED		
service life of LED	100 000 h		
design of the optical signal	continuous light		
light intensity	6.68 cd		
light intensity	3.87 ... 9.74 cd		
Enclosure			
height	67 mm		
width	52 mm		
outer diameter of the signal column element	50 mm		
material	PC		
color	clear		
fastening method	Bayonet		
protection class IP	IP54		
Ambient conditions			
ambient temperature during operation	-20 ... +50 °C		
Certificates/ approvals			
General Product Approval	EMC	Declaration of Conformity	

[Confirmation](#)



other

#### Further information

**Siemens has decided to exit the Russian market (see here).**

<https://press.siemens.com/global/en/pressrelease/siemens-wind-down-russian-business>

**Siemens is working on the renewal of the current EAC certificates.**

Please contact your local Siemens office on the status of validity of the EAC certification if you intend to import or offer to supply these products to an EAC relevant market (other than the sanctioned EAEU member states Russia or Belarus).

**Information on the packaging**

<https://support.industry.siemens.com/cs/ww/en/view/109813875>

**Information- and Downloadcenter (Catalogs, Brochures,...)**

<https://www.siemens.com/ic10>

**Industry Mall (Online ordering system)**

<https://mall.industry.siemens.com/mall/en/en/Catalog/product?mlfb=8WD4220-5AE>

**Cax online generator**

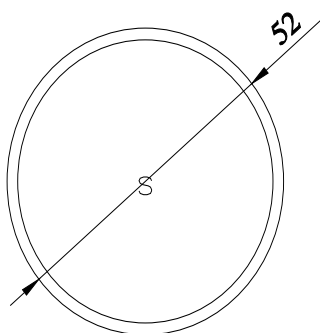
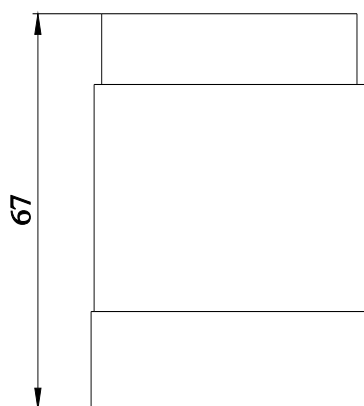
<http://support.automation.siemens.com/WW/CAXorder/default.aspx?lang=en&mlfb=8WD4220-5AE>

**Service&Support (Manuals, Certificates, Characteristics, FAQs,...)**

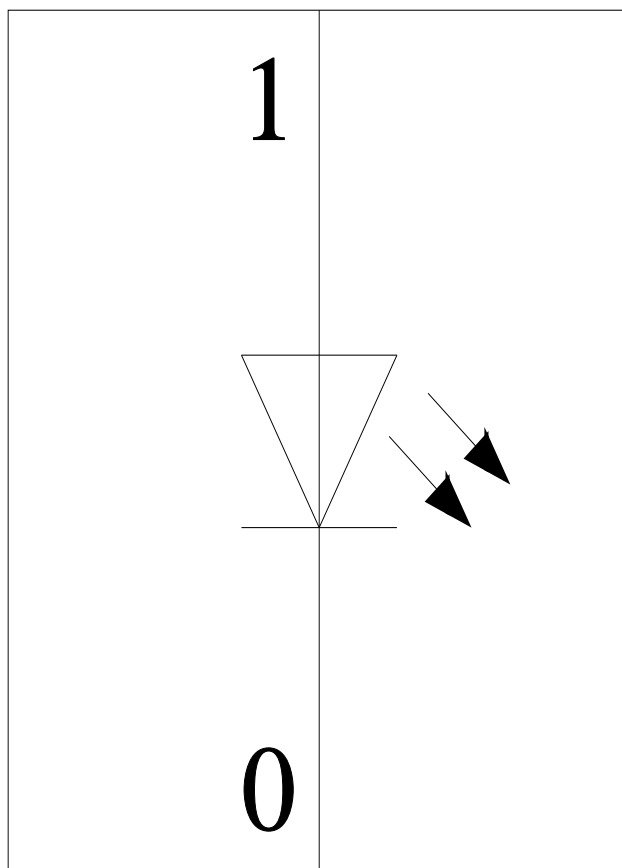
<https://support.industry.siemens.com/cs/ww/en/ps/8WD4220-5AE>

**Image database (product images, 2D dimension drawings, 3D models, device circuit diagrams, EPLAN macros, ...)**

[http://www.automation.siemens.com/bilddb/cax\\_de.aspx?mlfb=8WD4220-5AE&lang=en](http://www.automation.siemens.com/bilddb/cax_de.aspx?mlfb=8WD4220-5AE&lang=en)



**-P**



last modified:

2/25/2021 